

## First Information

ISU Grand Prix of Figure Skating Final®

ISU Junior Grand Prix of Figure Skating Final

2017 AICHI/NAGOYA



December 7-10, 2017



## City Overview : Nagoya

### Introduction



**Located in the center of Japan, Aichi Prefecture is a base for flourishing industries, art and culture, and is also blessed with the beauty of nature.**

Aichi is situated in the center of Japan and is roughly divided into a mountainous, hilly area and a plain. It has been a pivotal point for traffic between western and eastern Japan, and has flourished as a base for industries for centuries. The major industries of the prefecture are the ceramics in Seto and Tokoname, the automobile manufacturing in Toyota, and the woolen textile industry in Ichinomiya.

The city of Nagoya is the center of politics, economics and culture of Aichi Prefecture. The city has Nagoya Castle, noted for the golden pair of “shachis”, or the imaginary animals like a fish with the head of a tiger on top of the roof and Atsuta Jingu Shrine with a history of 1,900 years. A national treasure, Inuyama Castle, stands in Inuyama City 30 minutes away from Nagoya by train.



### City Overview

Introduction

### The Venue

### Travel Information

Airport Transportation

Nagoya City Route Map

### Travel Expenses and Air Tickets/ Accreditation/ Visa Application

Travel Expenses and Air Tickets

Schedule of Accreditation

Reissuing Accreditation

Visa Application

### Hotel Information

Team Members

Chaperons/Media Hotel

### Useful Information

General Information

Tourism and Culture

Shopping

Nagoya Food

### Event Schedule

### Summary of Deadlines



## City Overview : Nagoya

### Introduction

You can explore many wonderful sightseeing spots in Aichi. Above all, the popular destinations for tourists are, for example, Mikawa Bay Quasi-National Park, Hida-Kiso River Quasi-National Park, Tenryu-Okumikawa Quasi-National Park, Aichi Kogen Quasi-National Park, Atsumi-hanto Peninsula Prefectural Park, the Korankei Valley and the Gamagori and the Minamichita Hot Spring resorts.

We also have various peculiar festivals. The most famous ones are the Hadaka-matsuri Festival, or naked festival, dates back over 1,200 years in Owari-Konomiya in Inazawa City, and the Hana-matsuri, or Flower Festival (ritual Sinto art) in Oku-Mikawa region. Both are held in winter.

### DIRECTION

From Tokyo:

1h45min to Nagoya Station by JR Tokaido Shinkansen Line.

From Osaka:

1h from Shin-Osaka to Nagoya Station by Shinkansen.

### CLIMATE (December in Nagoya)

In Nagoya, city of Japan, located in the central part of the island of Honshu, in Aichi prefecture, the climate is **humid temperate**, with quite cold winters, and hot, humid and rainy summers.

Nagoya is located a short distance from the sea, north of Ise Bay, in the Nobi Plain, an area famous for being particularly hot in summer. In winter, mild periods, with highs around 12/15°C (54/59 F), alternate with cold and windy periods, with highs around 5/7 °C (41/45F) or less, and possible snowfalls (usually light).

**Day time Average 12.0°C (54 F)**

**Night time average 3.0°C (37 F)**

### TIME ZONE

Universal Time Coordinated : UTC+9

Daylight Saving Time: There are no future Daylight Saving Time rules for this time zone.

# Location



World

By Air

From	Duration	From	Duration
Frankfurt	12 hrs	Taipei	2 hr 30 min
Detroit	11 hr 40 min	Seoul	2 hrs
Helsinki	10 hrs	Busan	1 hr 40 min
Abu Dabi	15 hrs	Manila	3 hr 30 min
Beijing	3 hrs	Bangkok	4 hr 45 min
Shanghai	1 hr 30 min	Singapore	6 hr 15 min
Hong Kong	3 hr 30 min		

Japan

By Shinkansen - Bullet train

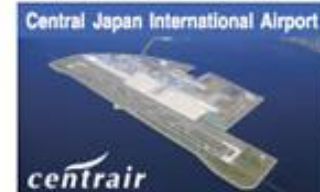
From	Duration
Tokyo	1 hr 40 min
Osaka	50 min
Kyoto	40 min

Aichi

Nagoya

U.S.K.Y - Airport express-

From	Duration
Centrair	28 min



Central Japan International Airport (Centrair) serves 16 domestic cities and 26 international cities.



## The Venue

### Nippongaishi Hall

5-1-16, Higashimata Matae-machi  
Minami-ku, Nagoya-city, Aichi  
457-0833, Japan  
Tel: +81 52 614 1111  
FAX: +81 52 614 3120

Japan Skating Federation will host the ISU Grand Prix of Figure Skating Final 2017 and ISU Junior Grand Prix of Figure Skating Final 2017 at the “The Nippongaishi Hall”.

The Nippongaishi Hall is a multi-purpose hall-style arena that can accommodate up to 10,000 people, and includes both fixed and movable seats.

It can accommodate various events such as concerts, conventions, exhibitions, and shows.

It is also used as an indoor sports hall in Nagoya.

### Facility outline

Arena area: 3,646m<sup>2</sup>

Capacity: approx. 4,800 seats (including arena seats)

Size of the ice rink: 30m x 60m





## Travel Information

### Airport Transportation

The Chubu Centrair International Airport is the only official airport of the event. Transport facilities and access time from the airport to the official hotel, Nagoya Marriott Associa Hotel as follows:

**OC Shuttle:** All ISU Event Officials, ISU Office Holders, ISU Guests, Judges and confirmed team delegation members are picked up at the Chubu Centrair International Airport (Central Japan International Airport –airport code NGO) according to the submitted arrival schedule, and necessary ground transportation will be organized to the official hotel, Nagoya Marriott Associa Hotel, free of charge. In case coaches, team doctors, chaperones, etc. are arriving with their teams, they also can take the same transportation , free of charge. In case coaches, team doctors, chaperones, etc. arriving individually and not at the same time as other team members, costs for transportation must be paid by such individually arriving persons at their own expense.

**The Meitetsu  $\mu$ -SKY Limited Express train ( $\mu$  = Greek letter for MU) :** a fast and convenient train that reaches Meitetsu Nagoya station from Chubu Centrair International Airport in 28 minutes.

Fare: 870Yen

Purchase the railway ticket before boarding the train.

Tickets can be purchased at ticket vending machines and ticket booths.

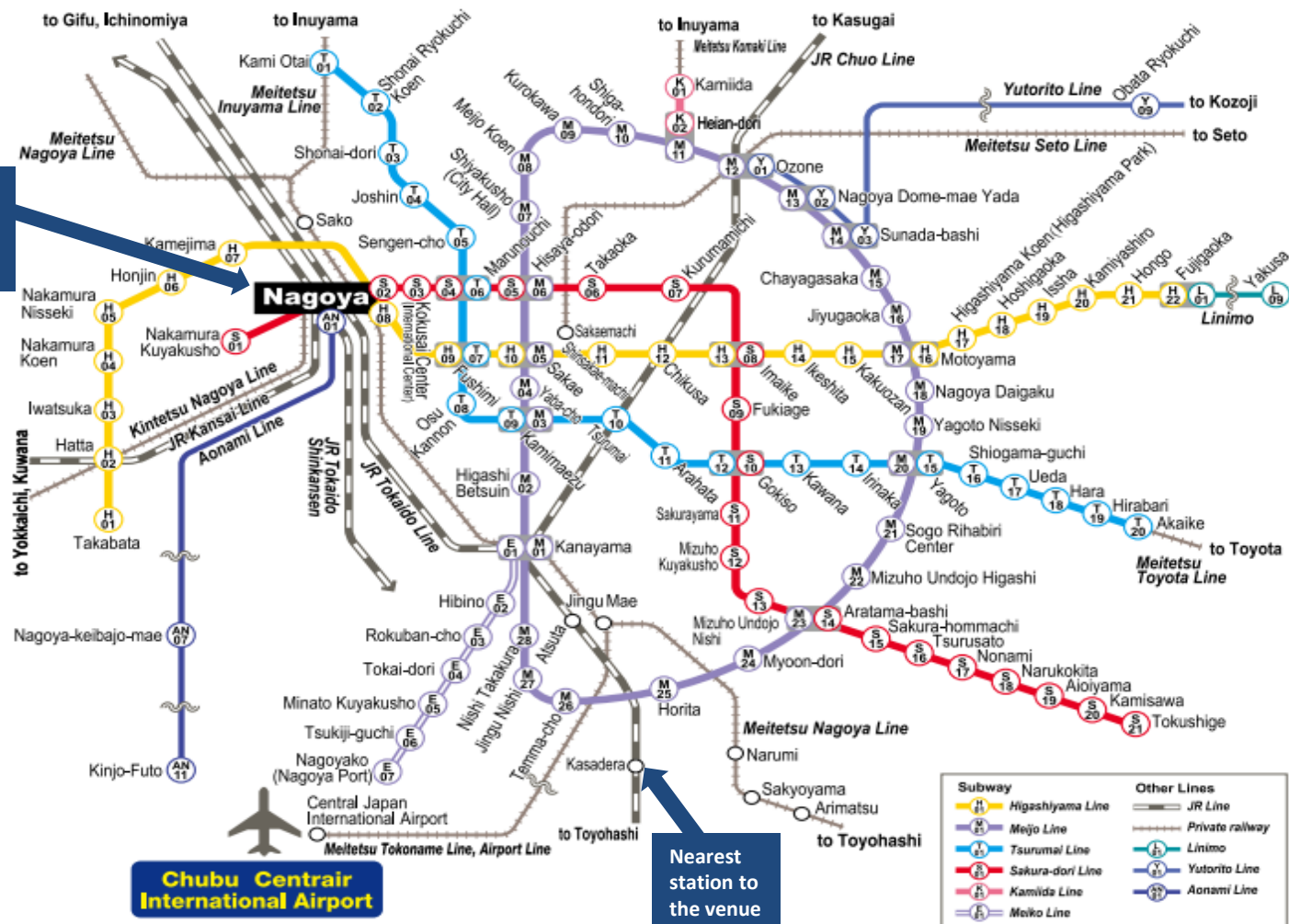


## Travel Information

### Nagoya City Route Map

Please note that One-Day Pass cannot be used on JR Line, private railways, Linimo, the elevated section of the Yutorito Line, or on Meitetsu Buses.

Nearest station to the Nagoya Marriott Associa Hotel



Chubu Centrair International Airport

Nearest station to the venue



## Travel Expenses and Air Tickets /Accreditation / Visa application

### Travel Expenses and Air Tickets

The OC is responsible for covering travel expenses for the return air-fare (economy airfare only) to Nagoya for all Competitors qualified for the ISU Grand Prix of Figure Skating Final and ISU Junior Grand Prix of Figure Skating Final as well as judges from the country of the member they represent. Please note that travel expenses will only be provided for a simple return fare from one origin point to Nagoya and back to the same origin point. No airfares for open jaw or two one-way tickets will be covered by the organizer.

The official travel agent “JTB” will contact the respective ISU Member federations after the last ISU Junior Grand Prix event and after the last ISU Grand Prix (seniors) and assist with making appropriate flight arrangements for qualified competitors and judges. If an ISU member federation (on behalf of their qualified competitors and / or judges) or any individual person on the expense of the OC decides to make own travel arrangements, the approval of the airfare from the OC is required before issuing any flight ticket.

### Schedule of Accreditation

The accreditation for all ISU Event Officials, ISU Office Holders, ISU Guests, Judges and confirmed team delegation members will be given at the “Nagoya Marriott Associa Hotel”. The registration room will be in operation at the official hotel on Monday, December 4 (starting at 13:00 hours) and on Tuesday, December 5. The exact operating hours will be communicated on site.

### Reissuing Accreditation

All accredited persons are requested to present their accreditation card when entering the competition venue and the shuttle bus. In case the accreditation card is lost, you need to ask the OC office in the competition venue or the hotel to reissue it as soon as possible, and the organizer will charge you 10,000Yen as its commission.

### Visa Application

Check the following URL to find out if you need to obtain a visa to enter Japan.

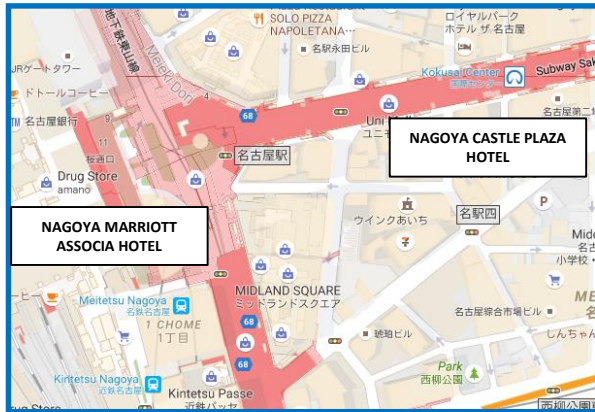
[http://www.mofa.go.jp/j\\_info/visit/visa/short/novisa.html](http://www.mofa.go.jp/j_info/visit/visa/short/novisa.html)

The procedure is shown in the following page to apply for a visa.

[http://www.mofa.go.jp/j\\_info/visit/visa/index.html](http://www.mofa.go.jp/j_info/visit/visa/index.html)

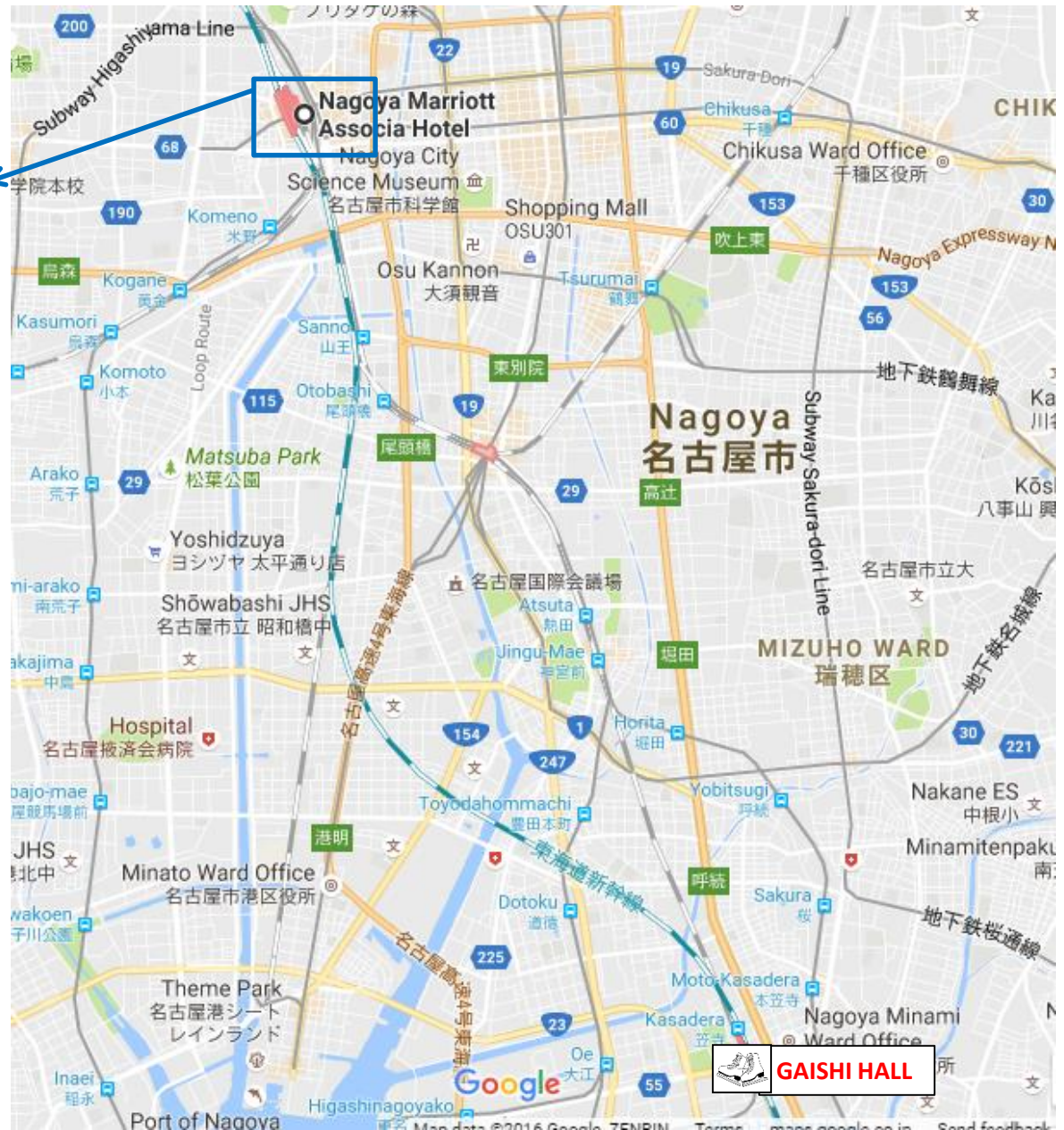
After submitting your entry forms, our agent will contact you directly and ask you to for some application questions e.g. name on passport, passport number, passport validity date, applying city, and they will send you the necessary package “official invitation letter” to your mentioned address by DHL as soon as possible. After receiving the package, applicants need to submit the passport with the necessary forms to the Consulate with the jurisdiction at a Japanese Embassy or Consulate General which is mentioned in your paper. It will take at least one week for the visa to be issued, so it is highly recommended to consider the timing for the application.





Between NAGOYA MARRIOTT ASSOCIA HOTEL  
and NAGOYA GAISHI HALL :  
25 minutes by OC shuttle bus

Between NAGOYA MARRIOTT ASSOCIA HOTEL  
and NAGOYA CASTLE PLAZA HOTEL:  
5 minutes on foot



## Hotel Information

### <Nagoya Marriott Associa Hotel>

OFFICIAL HOTEL for ISU/Judges/Teams/OC

1-1-4, Meieki, Nakamura-ku, Nagoya-city  
Aichi, Japan 450-6002  
Tel: +81 52 584 1111  
Fax: +81 52 584 1112  
URL: <http://www.associa.com/english/nma>

The Nagoya Marriott Associa Hotel offers supreme relaxation and international hospitality to all guests with a full of facilities.

The hotel is also conveniently located above Nagoya Station. (Directly connected to JR Nagoya Station)

Since J.W. Marriott founded the company in 1927, Marriott Hotels have welcomed successive generations of guests with warm hospitality and high-quality service. The Nagoya Marriott Associa Hotel would now like to extend that same invitation to you.



## Hotel Information

### <Nagoya Marriott Associa Hotel>

#### OFFICIAL HOTEL for ISU/Judges/Teams/OC

The accommodation and meal expenses for ISU Event Officials, Judges and Competitors will be covered by the OC from dinner on Tuesday, December 5, 2017 until breakfast on Monday, December 11, 2017.

Any members other than above such as Extra Team officials, Coaches, and Chaperones are requested to pay the following fee at the information desk located at the hotel lobby.

#### Room Charge

Standard Double room (25m<sup>2</sup>)

36,500Yen/per day (including Breakfast & Tax)

\*330USD (1USD=110Yen as of July 25, 2017)

Deluxe Twin room (38m<sup>2</sup>)

41,000Yen/per day (including Breakfast & Tax)

\*370USD (1USD=110Yen as of July 25, 2017)

**Check-in:** from 15:00

**Check-out:** until 12:00

#### Cancellation Policy

- ☐ 10-3 days prior to arrival date, 50% cancellation fee will be charged.
- ☐ 2-1 days prior to arrival date, 80% cancellation fee will be charged.
- ☐ no-show, 100% cancellation fee will be charged.

If cancellations after the entry deadline by name for rooms paid by the OC occur, any cancellation fee the OC had to pay to the hotel will be invoiced to the respective member.



#### Room Amenity

Shampoo/Conditioner/Shower gel/Body lotion/Facial Soap/  
Toothbrush/Razor & Shaving Cream/Comb/Hairbrush/  
Shower Cap/Cotton puff/Cotton Swab/  
Shoe mitt (Simple shoe shine)/Night dress/Slippers

#### Room Supply

Japanese tea/Tea/Coffee/ Kettle/Toilet with washlet attached/  
Iron/Hair-dryer/Refrigerator/Safety box/CS broadcasting  
(BBC/CNN etc.)

#### Telephone

Room to room: 8+ Room No.

International call: 0+010+Country code + Number

#### Internet

Complimentary Wi-Fi in all guest rooms is available.

#### Service

24-hour front desk

Fax/Photocopying

Hair/Beauty Salon

Dry Cleaning/Laundry

Massage/In room dining 05:30am-02:00am



## Hotel Information

### <Nagoya Marriott Associa Hotel>

OFFICIAL HOTEL for ISU/Judges/Teams/OC

#### Laundry Service

Dry-cleaning and laundry services are available seven days a week. Laundry bags and price list are located in the guest room closet. Picked up by 10:00 and done until 18:00 on the same day. Picked up from 10:00 to 15:00 and done on the next day at the noon. The hotel also provide 3-hours service between 10:00 and 15:00 upon your request.

#### Currency Exchange

At the hotel reception (24 H)  
US\$, €, CAN\$, GB£, CHF, TWD, SGD, AUD, HKD, THB are available

#### Safety box

Available at the hotel reception

#### Prepaid SIM for Japan

Data Communications SIM Card available at the hotel reception.

- SIM Card Size: Regular/ Micro/ Nano
- Usable Period: 7days/ 14days
- Price: 3,500 Yen/ 7days (tax included)  
4,500 Yen/14days (tax included)
- Data Speed: 150Mbps  
(Theoretical maximum; Actual speeds will vary and are not guaranteed.)
- High Speed Data Allotment: 100MB/Day

#### Fitness club (18F)

GYM Open from 5:00 to 21:00 (free of charge for staying guests)  
Swimming Pool open from 7:00 to 21:00 (available with 3,240 YEN including rental wear for staying guests)



#### Business Center (36F)

Business Hours: 7:00 to 22:00  
Services: PC with Microsoft Office, Internet access, Printers,  
Photo copies, Faxes  
Admission Fee for Our Staying Guests: 550Yen/30 min.

## Hotel Information

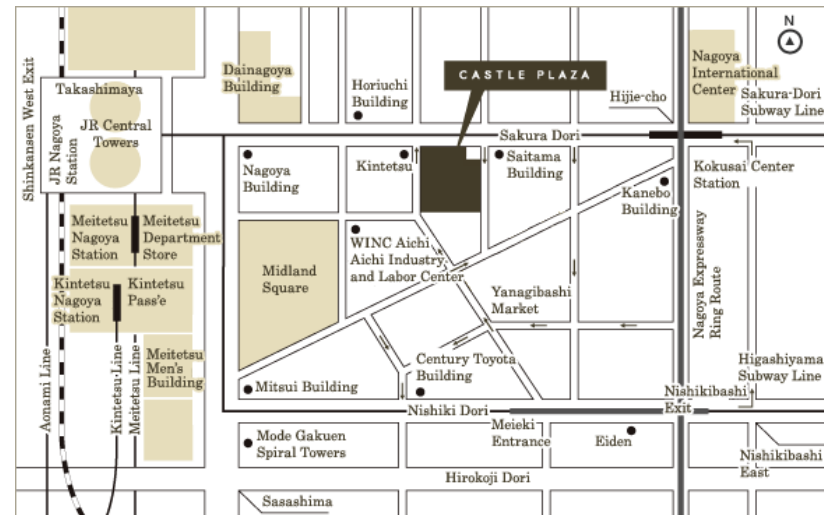
### <Castle Plaza Hotel>

OFFICIAL HOTEL for  
Team Members/Chaperones/Media

4-3-25 Meieki, Nakamura-ku, Nagoya-city,  
Aichi, Japan 450-0002  
TEL: +81-52-582-2121  
FAX: +81-52-582-8666  
URL: <http://www.castle.co.jp/plaza/>

Since 1981, Castle Plaza Hotel has been offering its convenience; surrounded by high buildings and department stores, about a 5 minutes walk from Nagoya Station and the Nagoya Marriott Associa Hotel, direct access to the subway lines, and access to the airport (approx., 60 minutes by car or 28 minutes by the Meitetsu Line) and major commercial buildings and shopping districts.

Standing at 14 stories tall, the inspiring hotel features guest rooms located on the 7th to 14th floors, instinctive 2 restaurants, 1 café, 1 bar, and 10 banquet halls that can accommodate events of various sizes.





## Hotel Information

### <Castle Plaza Hotel>

OFFICIAL HOTEL for Team  
Members/Chaperones/Media

#### Room Charge

Standard Single room (16.6-19.2m<sup>2</sup>)  
12,500Yen/per day (including Breakfast & Tax)  
\*110USD (1USD=110Yen as of July 25, 2017)  
Standard Twin room (21-25m<sup>2</sup>)  
17,000Yen/per day (including Breakfast & Tax)  
\*150USD (1USD=110Yen as of July 25, 2017)

#### Room Amenities

Shampoo/Conditioner/Body soap/Razor/Toothbrush  
set/Hair brush/Hair dryer/Facial wash/Cotton swabs/  
Body sponge/Nightwear(yukata)/Slippers/Bath mat/  
Bath towels/Face towels

#### Room Supply

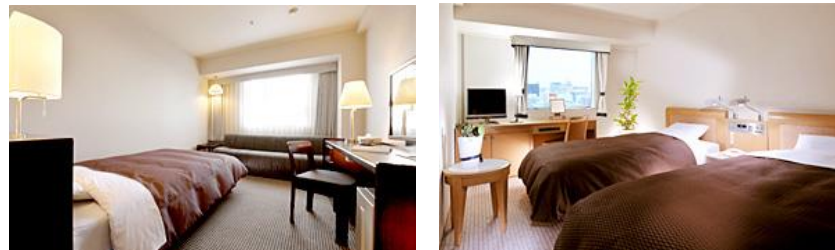
TV/Kettle/Refrigerator/Toilet with washlet attached

#### Amenities available upon request

The following items are also available upon request. Please  
contact the hotel reception for more information.

Sewing set/Humidifier/Iron/Ironing board/Pants presser/  
LAN cable/Desktop lamp/Shower cap

Please take note that some items may be in limited supply.



#### Restaurants

From traditional Japanese cuisine to casual Western buffet and Asia-style selections, guests will find something of their needs.

##### En (Chinese dining)

<Hours> Lunch: 11:30 - 14:00

Dinner: 17:00 - 21:30 (LO 21:00)

<Location> 2F

##### Café Plaza (Coffee shop)

<Hours> 08:30- 22:30 (LO 22:00)

<Location> 1F

##### Continental Bar

<Hours> Lunch: 17:00- 24:00 (closed on Sunday)

<Location> 2F



## Useful Information


### General Information

#### CURRENCY

The unit of Japanese currency is yen. Coins are available in denominations of 1, 5, 10, 50, 100 and 500 yen and bank notes in denominations of 1,000, 2,000, 5,000 and 10,000 yen. The smallest form of currency is the 1 yen coin, and the largest form of currency is the 10,000 yen bill. The 5 yen coin and 50 yen coin are rare worldwide in that they have holes in the middle of them. Please note that the values of all coins and bills excluding the 5 yen coin are written in Arabic numerals. Only the 5 yen coin has no Arabic numerals on it.

The 1,000 yen bill and 100 yen coin are used often. In addition to being accepted by many vending machines, the 1,000 yen bill makes your shopping go smoothly at the cash register. In addition, the 100 yen coin is the most widely-used coin in areas with automated installments such as coin-operated lockers and washing machines.


#### FINANCIAL SERVICES AND BANKING HOURS

Regular banking hours are Monday to Friday from 9:00 to 15:00. All banks are closed on Saturday, Sunday and national holidays. Also you may withdraw money with major credit cards or international cash card in Japan Post Bank ATMs or ATMs at major convenience stores. ATM marked with a Plus symbol  will accept automated banking cards from outside Japan.

**Note: for transactions that incur service charges, a fee is charged for the number of transactions.**

Major credit cards are accepted in most business establishments. The Japanese Yen has a favorable exchange rate. Most shops and restaurants will accept major international credit cards e.g. Visa, MasterCard, American Express Card, Diners Club, but no Euro Card is accepted in Japan; also traveler's cheque will be accepted in major shops, but it is recommended to visit the nearest major bank to change it to CASH for your convenience.

#### PASMO

"PASMO"  and other IC cards can increasingly be used for purchases (max 20,000 yen) at shops and restaurants in large cities, especially in and around train stations.

#### TAXES

Consumption tax in Japan is 8%. Currently, whether indicated prices are tax-included or not is up to the store. Please ask the staff if the prices include tax or not before making your purchase if you would like to know how much you must spend.

#### GRATUITY

Tipping in restaurants is not necessary. Hotel restaurants or cafe automatically add a service charge to the bill.

#### LIQUOR LAWS

The minimum legal drinking age in Japan is 20 years. At liquor stores, bars, you may be asked to show your identification.

#### ELECTRICITY

100V plug type A



## Useful Information

### Tourism and Culture

#### Nagoya Castle

Nagoya Castle (Nagoya-jo) is known throughout the world as one of Japan's greatest castles, alongside Himeji and Kumamoto Castles. The founder of the shogunate government that ruled Japan over roughly 265 years from the beginning of the 17th century, Tokugawa Ieyasu, had the castle completed by mobilizing influential daimyo from all over the country. The five-tiered donjon was roughly 19.5 m in height from the bottom of the moat to the stone wall on the foundation, and the building was 33.5 m tall. Most of the buildings were destroyed by fire in the air raid of May 1945, during WWII, but donjon and other structures were rebuilt in 1959. The gold sea creatures ornamenting the roof were also restored then, and are popular among the residents of Nagoya as the city's symbol, along with the castle.'

**Address**

Honmaru, Naka-ku, Nagoya-shi, Aichi

**Admission Fee**

500 yen

**Notes**

[Rail]JR Nagoya Station/Nagoya Subway Meijo Line/15 min./Shiyakusho (City Hall) Station/On foot/5 min.

#### LEGOLAND Japan

Outdoor theme park Legoland Japan has been opened in Nagoya on April 1 2017,

The park, located in the wharf area of the city's Minato Ward, will be the first outdoor Legoland theme park in Japan and the eighth in the world after parks in Europe, the United States, Malaysia and the United Arab Emirates. The 9.3-hectare park, aimed at families with children aged between 2 and 12, will have more than 40 attractions and will feature a 2.1-meter-high reproduction of Nagoya Castle made from more than 225,000 Lego bricks.

**one day ticket**

age 13 + : 6,980Yen

age 3-12 : 5,300Yen



## Useful Information

### Tourism and Culture

#### Noritake Garden

Noritake's history began in 1904 with a single dinner plate. Since then, Noritake has continued to make elegant and dynamic tableware in the same city under the same principles. In commemorating the 100th anniversary of Noritake Co., Ltd., Noritake Garden was opened on October 5, 2001 on the premises of Noritake's headquarters, the very birthplace of modern pottery. The facility, located in central Nagoya, boasts a land area of 48,000 square meters. It is divided into three zones: the Culture Zone, where you can discover culture, the Commercial Zone, a place to enjoy daily living, and the Historical Zone, a place to experience history, all of which are surrounded by lush greenery. Through this facility, Noritake hopes to contribute to the promotion of the tourism industry and the natural environment, as well as attempt to contribute to the local community and concretize our gratitude.

**Address**

Noritake-Shinmachi, Nishi-ku, Nagoya-shi, Aichi

**Admission Fee**

Free

#### Korankei

Korankei is a valley near Nagoya reputed to be one of the best spots for autumn colors in the Chubu Region. Shaping the valley is the 254 meter tall Mount Imori, on which Kojakuji Temple stands. In the 17th century, the head priest of Kojakuji planted some maple trees along the temple approach, prompting many locals to do the same in the area. Today, visitors to Korankei can see the fruits of these past efforts, in the form of excellent autumn scenery that peak around mid to late November each year.

**Address**

Noritake-Shinmachi, Nishi-ku, Nagoya-shi, Aichi

**Admission Fee**

300 yen



## Useful Information

### Shopping

If you visit Nagoya, and plan to go out for shopping, these are the recommended places for you.

#### Sunshine Sakae

**Shops:** Hours vary by shop; typically from 11:00 to 21:00

**Restaurants:** typically from 11:00 to 23:00

**Ferris Wheel:** 11:00 to 23:00, 500 yen

The most distinguishable feature of this shopping and entertainment complex is its 52 meter tall ferris wheel, named Sky Boat, that is accessed from the third floor. The complex also houses the theater and cafe/shop of SKE48, the Nagoya version of the AKB48 idol group. Advance reservations are required to view the group's performances.



#### Matsuzakaya

**Hours:** typically 10:00 to 19:30 (shopping), 11:00 to 22:00 (restaurants)

Matsuzakaya is a major department store chain that is based in Nagoya. Its flagship store occupies almost three blocks of the Sakae district. Its multiple buildings are connected by bridges as well as by an underground passageway. In addition to the usual clothing, interior, food and restaurant departments, the complex also has a Pokemon Center on the 5th floor of the main building.





## Useful Information

### Shopping

#### Mitsukoshi / Lachic

Mitsukoshi: 10:00 to 20:00

Lachic: 11:00 to 21:00 (shopping), 11:00 to 23:00 (restaurants)

Owned by the same company, Mitsukoshi and Lachic occupy two blocks in the Sakae district. Mitsukoshi is an eleven-story department store with two floors of brand name boutiques, a restaurant floor and a basement food floor. Lachic is a shopping mall with many trendy shops and cafes. The two buildings are joined by bridges on the third and sixth floors, as well as by an underground passageway.



#### Nadya Park

Hours: Vary by shop; typically 11:00 to 20:00

Closed: Tuesdays and New Year holidays (International Design Center Nagoya)

NADYA Park - **N**agoya, **D**esign, **Y**outh and **A**musement Park - aims to be the core of artistic and cultural activities for young people as well as the a center for all things design related. Tenants in Nadya Park include International Design Center Nagoya, a Loft department store, a Junkudo bookstore, and various fashion and lifestyle shops.



## Useful Information

### Nagoya Food

Located along the fertile Nobi Plain, Nagoya has long been an agricultural and economic center, allowing it to develop a strong culinary tradition wholly distinct from its neighbors'. Unlike the delicate subtlety of Kyoto Cuisine or the lavish Osaka food culture, local Nagoya specialties follow their own unique style and have the familiar feeling of hearty comfort foods. A wide variety of restaurants can be found around the city, especially around Nagoya Station, Sakae and along the city's various shopping arcades.

#### Hitsumabushi

Nagoya is the country's largest producer of fresh water eel (unagi), which are typically grilled, slathered in a rich, dark sauce, and served over rice. Nagoya's take on the dish, known as hitsumabushi, is served in a traditional wooden bowl accompanied by a rice bowl, a plate of condiments and a pot of broth. One eats hitsumabushi by splitting the serving of eel into four portions. For the first portion, scoop the eel into the rice bowl and eat it straight in order to savor the flavor of the eel. The second portion, eat with condiments added. The third portion, season to taste as before, but this time, add broth to create a type of chazuke. The final portion can be eaten as you like. Starting around 2,000-3,000 yen per person, the dish is relatively expensive.



#### Tebasaki

Tebasaki are seasoned, deep fried chicken wings that are made without batter. Crispy, salty and spicy, they are a great accompaniment to an ice cold beer. Though they can be found at almost any izakaya or yakitori-ya in Japan, tebasaki are particularly famous in Nagoya where they are a little spicier and served covered in white sesame seeds. A few chain restaurants even specialize in this dish.



## Useful Information

### Nagoya Food

#### Misokatsu

Misokatsu starts off as your typical tonkatsu dish: deep fried pork cutlets served with shredded cabbage and rice. But instead of traditional tonkatsu sauce, a thick, miso sauce is poured on top. The resulting meal has a rich, earthy flavor and a touch of sweetness that compliments the flavor of the crispy, fried pork cutlet. Misokatsu is widely served at restaurants or sold as boxed meals (bento).



#### Misonikomi

Misonikomi is a hearty hotpot dish descended from Yamanashi Prefecture's hoto noodles. The dish's miso based broth contains extra thick noodles that have more in common with dumplings than udon, and is typically served in individual sized earthen pots. Popular ingredients include green onions, chicken, mushrooms, raw egg and rice cakes (mochi). Misonikomi can be found at specialty restaurants and other establishments.



#### Kishimen

Kishimen are broad, flat wheat noodles similar to udon. This inexpensive dish is served similar to udon and soba and can be ordered either hot in a fish-based soup or cold accompanied by a dipping sauce.



## Event Schedule(as of July 25, 2017) – subject to change

Date	Time	Event	Place
Wednesday, December 6	All Day	Official Practice	Venue
	08:30 -	Team Leaders Meeting	Venue
	09:30 -	Medical Meeting	Venue
	10:00 -	Technical Panel Meeting MEN	Venue
	11:00 -	Technical Panel Meeting PAIRS	Venue
	12:00 -	Technical Panel Meeting ICE DANCE	Venue
	13:00 -	Technical Panel Meeting LADIES	Venue
	17:00 -	Referee & Technical Controllers Meeting	Nagoya Marriott Associa Hotel
	17:45 -	Judges Meeting	Nagoya Marriott Associa Hotel
	20:30 -	ISU & Judges Dinner	Nagoya Marriott Associa Hotel
Thursday, December 7	All Day	Official Practice	Venue
	14:10 -	Junior Pairs Short Program	Venue
	15:30 -	Junior Men Short Program	Venue

## Event Schedule(as of July 25, 2017) – subject to change

Date	Time	Event	Place
Thursday, December 7	16:40 -	Junior Ladies Short Program	Venue
	17:40 -	Opening Ceremony	Venue
	18:15 -	Senior Pairs Short Program	Venue
	19:30 -	Senior Men Short Program	Venue
	20:40 -	Senior Ice Dance Short Dance	Venue
Friday, December 8	All Day	Official Practice	Venue
	14:40 -	Junior Ice Dance Short Dance	Venue
	16:00 -	Junior Pairs Free Skating	Venue
	17:30 -	Junior Men Free Skating	Venue
	18:55 -	Senior Ladies Short Program	Venue
	20:15 -	Senior Men Free Skating	Venue
		Victory Ceremonies - SrM, JrM, JrP	Venue



## Event Schedule(as of July 25, 2017) – subject to change

Date	Time	Event	Place
Saturday, December 9	All Day	Official Practice	Venue
	08:00 -	Round Table Discussion Junior Pairs	JR Gate Tower
	09:15 -	Round Table Discussion Junior Men	JR Gate Tower
	10:30 -	Round Table Discussion Senior Men	JR Gate Tower
	11:45 -	Technical Panel Review Meeting Men	JR Gate Tower
	13:45 -	Junior Ice Dance Free Dance	Venue
	15:05 -	Junior Ladies Free Skating	Venue
	16:25 -	Senior Pairs Free Skating	Venue
	17:55 -	Senior Ice Dance Free Dance	Venue
	18:00 -	Technical Panel Review Meeting Pairs	Venue
	19:20 -	Senior Ladies Free Skating	Venue
	19:30 -	Technical Panel Review Meeting Dance	Venue
		Victory Ceremony - SrL, JrD, JrL, SrP, SrD	Venue
	22:00 -	Technical Panel Review Meeting Ladies	JR Gate Tower

## Event Schedule(as of July 25, 2017) – subject to change

Date	Time	Event	Place
Sunday, December 10	08:00 -	Round Table Discussion Junior Ice Dance	JR Gate Tower
	09:15 -	Round Table Discussion Junior Ladies	JR Gate Tower
	10:00 -	Exhibition Practice	Venue
	10:30 -	Round Table Discussion Senior Pairs	JR Gate Tower
	11:45 -	Round Table Discussion Senior Ice Dance	JR Gate Tower
	13:00 -	Round Table Discussion Senior Ladies	JR Gate Tower
	14:30 -	Exhibition	Venue
	20:00 -	Closing Banquet	Nagoya Marriott Associa Hotel



## Summary of Deadlines

Form		Deadline Day
ORS	Composition of Delegation	November 30, 2017
ORS	Entry for Competitors (Juniors)	November 3, 2017
ORS	Entry for Competitors (Seniors)	November 30, 2017
ORS	Entry for Judges	November 30, 2017
ORS	Hotel Request	November 30, 2017
ORS	Inquiry of Bank Account	November 30, 2017
ORS	Team Travel Information	November 30, 2017
	Skater Health Care Form	November 30, 2017
	Press Information	November 30, 2017
	Competition Music Information	November 30, 2017



## Summary of Deadlines

Form		Deadline Day
	Ice Dance Music Information	November 30, 2017
	Exhibition Music Information	November 30, 2017
	Planned Program Content	November 30, 2017
	Visa Request Form	a.s.a.p.