



FIRST INFORMATION

2017 SKATE CANADA INTERNATIONAL

 **Grand Prix of Figure Skating 2017/2018**



October 26 – 29, 2017

Regina, Saskatchewan, Canada

Brandt Centre

Regina

Regina, Saskatchewan, Canada is proud to be the host city of the 2017 Skate Canada International.

Location

Regina is the Canadian City closest to the geographical center of North America. It is located on the Trans-Canada Highway midway between Winnipeg, Manitoba and Calgary, Alberta. It is situated above the American states of North Dakota and Montana.

Climate

Regina has a continental climate with cold, dry winters and warm summers. It is the provincial capital with the sunniest skies, averaging 2,365 hours of sunshine each year. Being on the semi-arid plains, the city receives about 264 millimeters of precipitation annually. There are about 113 frost-free summer days.

Industry and Commerce

Regina has a resource-based economy tied to oil and gas, potash and agricultural production. It is home to the Co-op Refinery Complex (CRC), the world's first co-operatively-owned refinery; EVRAZ, a vertically integrated steel, mining and vanadium business; and Viterra, a leading grain and oilseeds marketer and handler. The city is also home to these provincial crown utilities: SaskEnergy, SaskPower and SaskTel. The city's economy has also diversified into banking and finance, computer and information technology, manufacturing and telecommunications.

Visit [Tourism Regina](http://TourismRegina.com) for additional information.





Venue

The competition venue Brandt Centre, built in 1977 is a 6,000-seat facility that has played host to the biggest musical names in show business. Doubling as a concert hall, and a venue for championship curling, figure skating, basketball, rodeos, and other sporting and agricultural showcases. Some well-known events hosted in the Brandt Centre have been World Junior Hockey Championships, Ford World Men's Curling Championship, Canadian Figure Skating Championships, Scotties Tournament of Hearts, The Brier and the Olympic Curling Trials. Brandt Centre has hosted all home games of the WHL's Regina Pats for the last 34 years. Bid name converts include: Justin Bieber, Katy Perry, Big & Rich, Elton John, Carrie Underwood, Motley Crue and Iron Maiden providing a perfect mix of entertainment for many people to enjoy.

The Co-Operators Arena – Rink #5 is the practice venue, directly attached to the Brandt Centre within Evraz Place.

Now, three years after Skate Canada Challenge in 2014, Regina will be home to skating on the international stage. Regina will welcome the International Skating Union family and spectators to enjoy 2017 Skate Canada International in its superb facility. Brandt Centre is centrally located, just minutes from downtown Regina and the Regina International Airport, which makes it the perfect location for events. The property is also located on a City of Regina bus route.

The size of the competition venue is 200 ft. x 85 ft. Driving time from the Regina International Airport and the Brandt Centre is 3.1 km, approximately six minutes depending on traffic conditions.

Extra Practice Ice

Unofficial extra practice ice is available for purchase at the Co-Operators Arena – Rink #5.

Availability:

The ice will be booked on a first come first serve basis. The extra practice ice is \$125/hour.

Please email: 2017sci@skatecanada.ca no later than October 19, 2017 to book extra practice ice.



Accommodations

Official Hotel

DoubleTree by Hilton Hotel & Conference Centre Regina

1975 Broad Street

Regina, Saskatchewan, Canada

S4P 1Y1

Phone: 1.306.525.6767

[Website](#)



Amenities

- ◆ Complimentary WiFi
- ◆ Business Centre
- ◆ Restaurant
- ◆ 24hr Pavillion Pantry Market
- ◆ Automated Teller (ATM)
- ◆ Fitness Centre
- ◆ Starbucks

DoubleTree by Hilton Hotel & Conference Centre Regina is conveniently located in the heart of downtown Regina, on a main thoroughfare into the city and is only 15 minutes from Regina International Airport (YQR). The hotel is within walking distance of several provincial head offices for companies such as SaskPower, SaskTel and Mosaic. Try your luck on the slot machines at Casino Regina and watch the Saskatchewan Roughriders play at Mosaic Stadium at Taylor Field. Learn about the history of the Royal Canadian Mounted Police at the RCMP Training Centre, attend the MacKenzie Art Gallery or the Museum of Natural History and take in the natural beauty of Wascana Park. Explore downtown Regina to discover an abundance of specialty shops, theaters and restaurants.

Event Staff Hotel

Ramada Plaza Regina

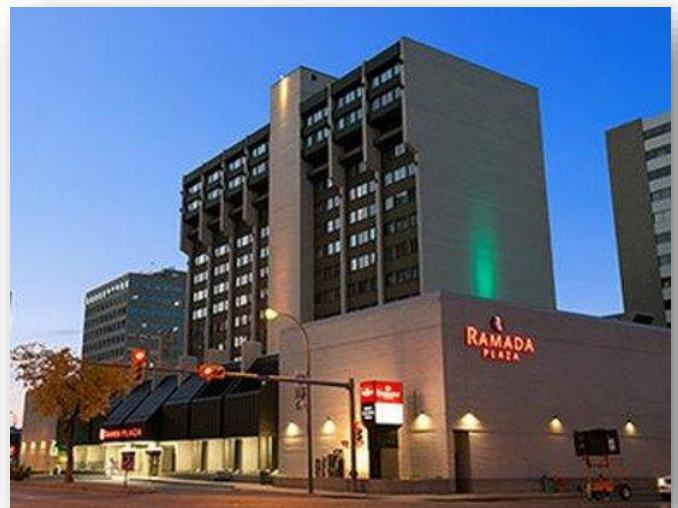
1818 Victoria Avenue

Regina, Saskatchewan, Canada

S4P 0R1

Phone: 1.306.569.1666

[Website](#)



Amenities

- ◆ Complimentary WiFi
- ◆ Business Centre
- ◆ Restaurant
- ◆ 24hr Reception Desk
- ◆ Automated Teller (ATM)
- ◆ Fitness Centre

General Accommodation Information

Reservations

All reservations must be made through the Organizing Committee (OC) via the ISU Online Registration System (ORS). Individual reservations by Team Members at the Official Hotel will not be accepted. If rooms are cancelled after **Tuesday October 24, 2017** even if it is for rooms that the OC is required to pay for, any cancellation fees the OC incurs will be invoiced to the Member Federation.

OC Accommodations Contact:

Paul Kitcher

2017sci@skatecanada.ca

Rates

Single/Double Occupancy: \$136

Triple Occupancy: \$151

Quadruple Occupancy: \$166

All rates are in CAD and are subject to 3% DMF, 5% GST and 5% PST

Room Payment

The Organizing committee will pay costs for accommodation for athletes, officials, judges and ISU officials in accordance with the ISU Grand Prix of Figure Skating Announcement 2017-2018, item 7.5 and the Skate Canada International Announcement 2017, item 4.

Federations will be sent invoices for the room costs not covered by the Organizing Committee. Please make payment to the Organizing Committee at the latest by Friday, October 20, 2017.

Extra Services, Incidentals and Damages

Each person will require a valid personal credit card or cash deposit at time of check-in to the hotel to cover incidentals as well as a security deposit. Payment for incidental services is the guest's responsibility and should be settled directly with the hotel at check-out.

Contact Person and Room Changes

For questions or problems relating to rooms, relocations, incidental charges, etc., the Team Leader of each team will be the contact person. Any room relocations or changes to the rooming list must be made through the Organizing Committee as no room changes will be accepted by the hotel from guests directly.

Dining Room

Skaters, Judges and other ISU officials entitled to receive the meal program will receive vouchers for the period outlined in the official announcement, beginning with dinner on Wednesday, October 25, 2017 until breakfast on Monday, October 30, 2017. Please refer to the meal hours below.

Location: MooseJaw Room

Meal vouchers and drink tickets for Skaters, Judges and other ISU Officials will be distributed at Registration and can be used only on the specified date. Additional meal and drink tickets will be available for **purchase on-site** only from the Organizing Committee outside the dining room (Moose Jaw) for accompanying persons of ISU Officers, Council Members, and Officials. In addition; Team Leaders, Assistant Team Leaders, coaches or other Federation Officials wishing to take advantage of the meal service may purchase individual meal tickets from the Organizing Committee at the time of Registration or outside the dining room (Moose Jaw) during dining room hours. The meal vouchers and drink tickets are **not transferable** and will be accepted only in combination with an accreditation tag.



Meal Service Prices

Breakfast:	\$20.00 CAD
Lunch:	\$24.00 CAD
Dinner / Late Dinner:	\$36.00 CAD
All Meals (1 day):	\$80.00 CAD

Dining Room Hours

Breakfast:	06:00 – 10:00
Lunch:	11:30 – 14:30
Dinner:	17:30 – 22:00
Late Dinner:	22:30 – 01:00

Travel Information

The OC will provide transportation from the Regina International Airport (YQR) to the Official Hotel starting on Monday, October 23, 2017.

Team Members (Skaters, Team Leaders, Team Officials), Event Officials, VIP's, ISU Office Holders, Special Guests and Member Presidents will be met by the OC at their arriving Terminal and direct them to their transportation. Please provide the OC with the appropriate travel details on ORS. Once you have arrived and received your baggage please look for the Skate Canada Representative who will direct you to the appropriate transportation.

Transportation will also be made available for Coaches, Chaperones and Medical Staff if they are travelling with the Team and they have provided all travel details in the ORS. There will be a \$50.00 fee for each coach, chaperone and medical staff for their arrival and departure transportation.

Should any guest's arrival be delayed for any reason, they are asked to inform the OC as soon as possible with the expected arrival time in Canada so that transportation arrangements can be modified. Do so by contacting the **Transportation Desk at 1.613.914.5348.**

There are several airport transportation options available for anyone who has not informed the OC of their arrival information or those arriving prior to the date indicated for the start of the airport shuttle service. Visit the Regina International Airport (YQR) for more information about [Ground Transportation](#). If a guest chooses one of these methods of transportation to the hotel, the OC is not responsible for the costs.

Passports and ID

The Government of Canada requires that all travelers carry a valid passport as the only universally-accepted travel and identification document for the purpose of international travel. People who live in countries where a visa is needed to enter Canada must obtain one from a Canadian embassy abroad before coming to Canada.

Note: VISA processing can take several months in some countries.

Visitors must have valid travel documents to enter Canada. Document requirements vary depending on which country you are travelling from. For specific information on travel documents and to find out if you require a visa to enter Canada as a visitor, please refer to <http://www.cbsa.gc.ca/> and <http://www.cic.gc.ca/>.

Important Notice: As of March 15, 2016, an Electronic Travel Authorization (eTA) is mandatory for visa-exempt foreign nationals travelling to Canada by air (not by land or sea.) The authorization is electronically linked to your passport, so no additional documents are necessary. It is valid for five years or until your passport expires, whichever comes first. To avoid any issues at the airport, you should get your eTA as soon as you begin planning your trip to Canada. To find out if you need an eTA or to apply online, visit this [website](#).



Shuttle Bus Service

A shuttle bus service will run between the DoubleTree by Hilton Hotel & Conference Centre Regina and the Brandt Centre. The shuttle bus service will commence on **Thursday, October 26, 2017** and run until **Sunday, October 29, 2017**, departing every 30 minutes from both the hotel and the Brandt Centre. A detailed schedule will be available at registration.

Registration and Accreditation

All Competitors, Team Leaders, Team Managers, Team Officials, Team Medical, Judges, Coaches must register at the *DoubleTree by Hilton Hotel & Conference Centre Regina – Registration – Qu'Appelle* from Wednesday, October 26 (14:00-22:00).

Registration will move to the *Brandt Centre – Team Entrance* – starting Thursday, October 26, 2017 at 07:00.

All competitors will be required to present their passport (and clearance certificate if applicable) prior to receiving accreditation. Accreditation will not be issued without presentation of a valid passport.

Forgotten, lost or stolen accreditation cards must be reported and can only be replaced for a cash fee of \$100 CAD. The replacement is upon approval of the ISU and the OC.

Location	Date	Hours
DoubleTree by Hilton Hotel	Wednesday, October 25	14:00 – 22:00*
Brandt Centre – Registration, Team Entrance	Thursday, October 26	07:00 – 19:00
	Friday, October 27	12:00 – 19:00
	Saturday, October 28	12:00 – 18:00
	Sunday, October 29	09:00 – 12:00 (Prize Money)

*Open for late arrivals, if necessary.

Event Office Hours

Location	Date	Hours
DoubleTree by Hilton Hotel	Wednesday, October 25	14:00 – 20:00*
Room - SBCC One	Thursday, October 26	09:00 – 13:00, 15:00 – 17:00
	Friday, October 27	09:00 – 11:00
	Saturday, October 28	09:00 – 13:00, 15:00 – 17:00
	Sunday, October 29	09:00 – 12:00 (Prize Money)

*Open for late arrivals, if necessary.

Chaperones

Chaperones (a maximum of one per skater) will not be accredited, and must purchase an event ticket at face value to enter the Brandt Centre to watch the competition. Each Chaperone will receive a bus pass for the Event Shuttle Bus, they will all be given to the Team Leader to be distributed. All bus passes are not replaceable and should be handled with care.

Closing Party

The Closing Party with a Red-Carpet theme will be held on Saturday, October 28, 2017 from 22:00 – 01:00 in the *DoubleTree by Hilton Hotel & Conference Centre Regina – Capital Ballroom*. Dress is business casual. A light buffet is included.



Invitations for the Closing Party will be issued to the ISU office holders, ISU officials, judges, competitors and Skate Canada guests at Registration.

Additional persons (only accredited individuals) may purchase a ticket for this function at the *DoubleTree by Hilton Hotel & Conference Centre Regina – Event Office – SBCC 1*. Cost per ticket is \$50 CAD and must be purchased by Friday, October 27, 16:00.

Tickets must be presented at the door. If closing party tickets are lost, new tickets must be purchased at the user's own expense.

Event Ticket Information

Tickets are available through Ticketmaster:

https://www.ticketmaster.ca/search?tm_link=tm_homeA_header_search&user_input=skate+canada+international&q=skate+canada+international

Other Useful Information

Language

English is the predominant language of Regina, although both English and French are the official languages in Canada. Most government services are available in either languages.

Regina Public Transit

Plan your trip with the user-friendly Google Maps Trip Planner.

Financial Services and Banking Hours

Regular banking hours are Monday to Friday from 10:00 until 16:00 with extended hours including weekends at many locations. Many banks are open Saturdays until 15:00 and closed Sundays and on holidays.

Major credit cards are honoured in most business establishments. Automated teller machines (ATMs) marked with a Plus or Interac symbol will accept automated banking cards from outside Canada. Banks charge a fee of approximately \$2 for international transactions. The visitors' bank sets the exchange rate.

For currency conversions refer to: <http://www.bankofcanada.ca/rates/exchange/daily-converter/>

Taxes

The Goods and Services Tax (GST) is a five percent (5%) tax that is applied to most supplies of goods and services made in Canada. Almost all services and products are subject to a 5% GST. Most prices posted in stores do not include taxes. Visitors to Canada may be eligible for tax rebates. Rebate forms are available at the airport or Tourism Office. There is no rebate on consumable items such as meals, liquor, tobacco, transportation costs and gasoline.

Currency

The currency is the Canadian dollar (CAD). For denominations under five dollars, Canadians use coins, including what are affectionately known as the "Loonie" (one-dollar coin) and "Toonie" (two-dollar coin). Daily currency exchange rates appear in newspapers and online, and are posted at banks throughout the city.

Tipping

While tipping is not mandatory in Canada, it is customary in many circumstances for good service, especially in sit-down restaurants, which offer table service. If you're happy with the service you receive, a 15-20% tip on the pre-tax bill is a standard expression of appreciation. It is also customary to tip bellhops, luggage handlers and taxi drivers at your discretion.



Electricity

Electricity sockets are 120V plug type A. Visitors with appliances of different voltages should bring adapters.

Tobacco and Alcohol

The legal drinking age in Saskatchewan is 19; a driver's license is considered a valid form of identification. You must be at least 18 years of age to purchase cigarettes. Smoking is banned in public spaces and workspaces in Saskatchewan, including restaurants, bars and private clubs. The ban extends to outdoor public areas such as playgrounds, sport fields and spectator areas.

Shopping Centres

Cornwall Centre - <http://www.cornwallcentre.ca/>

Northgate Mall - <http://northgatemall.ca/>

Grasslands - <http://www.grasslands.ca/>

Southland - <http://www.southlandshoppingcentre.com/#>

Business Hours

In general, stores are open from 09:00 until 17:00 from Monday to Saturday, Sunday from 12:00 until 17:00. Some shopping malls are open 10:00 until 21:00. Some large pharmacies, grocery stores and bookstores stay open late all week, and some smaller boutiques may open their doors later in the morning.

Time Zone

Central Standard Time (CST) is 5 hours behind Greenwich Mean Time (GMT).

Climate

<https://www.theweathernetwork.com/ca/14-day-weather-trend/saskatchewan/regina>

Emergency Services

The emergency number for all health, safety, police and crime emergencies is 9-1-1.

Taxis

Capital Cab D&G Taxi Ltd. +1 306 791 2222

Co-Op Taxi +1 306 525 2727

