



**WORLD JUNIOR SYNCHRONIZED
SKATING CHAMPIONSHIPS®**

2020

NOTTINGHAM, GBR

**13-14 MARCH 2020
FIRST INFORMATION**



www.wjsysc2020.com

CONTENTS

3	Welcome to Nottingham <ul style="list-style-type: none">- Explore Nottingham- Nottingham map
5	Introducing the Venue
6	Accommodation <ul style="list-style-type: none">- Officials' hotel- Team accommodation
10	Travel & Transportation <ul style="list-style-type: none">- Official transport- Getting to the Motorpoint Arena Nottingham- Travelling to the UK
11	Accreditation
12	Competitor Information
13	Summary of Deadlines
14	Preliminary Event Schedule
15	Contact
16	Useful Information
17	Mini-guide to Nottingham

WELCOME TO NOTTINGHAM

Nottingham is delighted to welcome you to the ISU World Junior Synchronized Skating Championships® 2020.

Known around the world as the home of the famous folklore hero, Robin Hood, Nottingham is a city offering culture, history, shopping, sport, arts and green spaces to breathe.

Right in the middle of the country - you can travel to London or Manchester in less than two hours and Birmingham in under an hour. With excellent transport links, Nottingham is set to be the perfect location for the WJSYC2020.



EXPLORE NOTTINGHAM

The city centre is largely pedestrianised and compact with an excellent transport network, making Nottingham perfect for relaxed strolling and sight-seeing.

History

Robin Hood is one of the world's best loved folklore heroes and Nottingham is the place to learn more about the legend. Start with Nottingham Castle and then venture deeper down underground where you can explore part of Nottingham's subterranean network of over 550 caves at the City of Caves, with the thrilling National Justice Museum nearby presenting an extensive and grisly history of crime and punishment in the city.

Arts & Culture

The Motorpoint Arena Nottingham is based in the Lace Market which is the oldest area of the city and makes up part of the Creative Quarter. The district has its own unique character, and today the area merges history with independent culture, revealing the spirit of modern Nottingham. The city is brimming with lively bars, restaurants and modern art at the Nottingham Contemporary gallery. Venture further into the city and you'll find world-class theatres, shopping, galleries, music venues and more.

Shopping

If you love to shop, Nottingham offers an enticing mix of high street, designer boutiques and vintage clothes stores. Popular shopping destinations include Intu Victoria Centre, Bridlesmith Gate and Clumber Street.

Food

Nottingham is the perfect location to sample England's most famous dish - traditional fish and chips! Speak to a local who will also tell you Nottingham's favourite topping is mushy peas - don't leave town without trying it! With over 300 bars and restaurants in the city centre alone, you will be spoilt for choice when it comes to dining in Nottingham, ranging from traditional English fayre to international cuisine.

NOTTINGHAM MAP



MOTORPOINT
arena
NOTTINGHAM



ISU WORLD JUNIOR SYNCHRONIZED
SKATING CHAMPIONSHIPS®
2020
NOTTINGHAM, GBR

Key

- P** Car parking
- Tram route and stops
- i** Nottingham Tourism Centre
- T** Toilets
- T** Disabled Toilets
- T** Changing Places Toilets

Scale:
0 Metres 400

Walking distance:
Approximately 5 minutes walking distance

This map should be used as a guide only.
All information correct at Nov 2019.

Official Event Hotels

- A** Crowne Plaza
Wollaton St, NG1 5RH
- B** Hotel Ibis Nottingham Centre
Fletcher Gate, NG1 2FS
- C** Jurys Inn Hotel
Station St, NG2 3BJ
- D** Lace Market Hotel
High Pavement, NG1 1HE
- E** Mercure Nottingham City Centre
George St, NG1 3BP
- F** Premier Suites Ice House,
Belward St, NG1 1JZ
- G** Premier Inn,
London Rd, NG2 4UU

Car parks

- P1** Arndale (Maid Marian Way)
- P2** Castle (Canal St)
- P3** Cowan Street
- P4** Curzon Street
- P5** Huntingdon Street
- P6** Lace Market
- P7** Manvers Street

Tram stops

- A** Nottingham Trent University
- B** Royal Centre
- C** Old Market Square

- P8** Mount Street
- P9** Motorpoint Arena
- P10** Nottingham Arena (Brook St)
- P11** Nottingham Station
- P12** Sheriff's Lodge (Temporary)
- P13** Sneinton Market Square
- P14** St James Street

- D** Lace Market
- E** Nottingham Station

- P15** Stoney Street
- P16** Talbot Street
- P17** Trinity Square
- P18** Upper Parliament Street
- P19** Victoria Centre North
- P20** Victoria Centre South
- P21** Wollaton Street (Crowne Plaza)

Nottingham Railway Station



Bus station



Victoria



INTRODUCING THE VENUE



The Motorpoint Arena Nottingham is the East Midlands' premier entertainment venue. With a 10,000-crowd and 6,500 seating capacity; the Arena hosts over 120 events each year and showcases the biggest names in international music, comedy and sport.

Adjoining the Arena is the National Ice Centre, designated as the UK's first centre of excellence in ice sports and famed for being the home of Olympic ice-skating legends Jayne Torvill & Christopher Dean. The outstanding facilities include two Olympic sized ice pads (30m x 60m) with two cafes overlooking the ice.

The city of Nottingham is very proud of its long tradition of successes on ice and is sure you'll be impressed with the excellent facilities at the National Ice Centre.



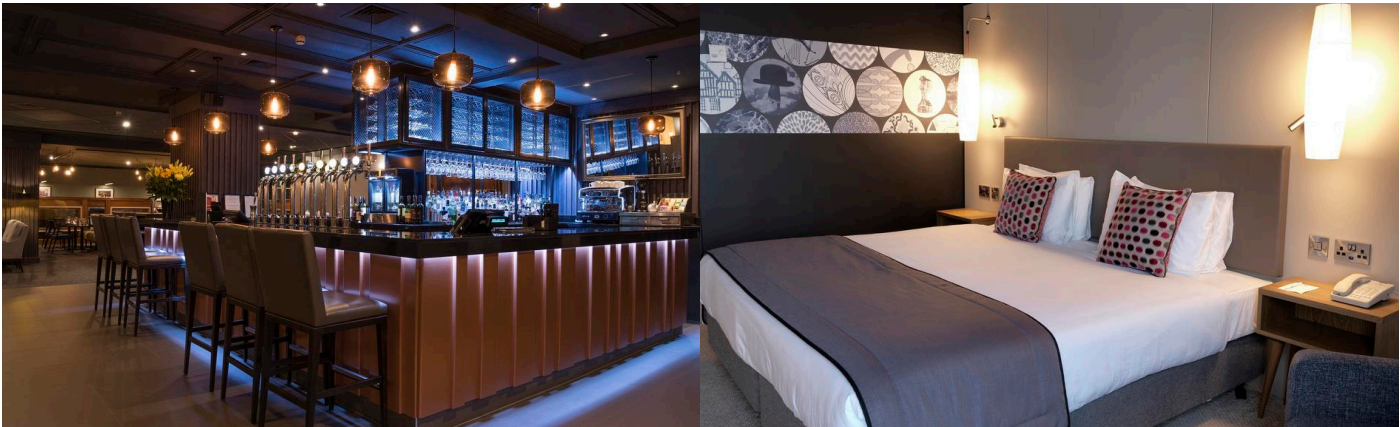
ACCOMMODATION

OFFICIALS' HOTEL

For ISU Officials and Judges.

Crowne Plaza Nottingham, Wollaton Street, NG1 5RH
www.ihg.com/crowneplaza/hotels/gb/en/nottingham/notws/hoteldetail

Designated hotel for the event officials, the Crowne Plaza is a modern venue offering complimentary wi-fi, spa, gym, pool and onsite restaurant.



TEAM ACCOMMODATION

We are delighted to offer teams the following official WJSYSC2020 hotels. The table below displays the variety of accommodation on offer and their rates per room per night.

Hotel	Rating	Distance to venue (km)	Price per night				
			1-person room	2-person room	3-person room	4-person room	5-person room
Ibis	2*	0.5km	£68	£72	£76		
Premier Inn*	3*	0.5km	£99	£99	£99		
Premier Suites**	3*	50m	£115	£115	£175	£175	£200
Jury's Inn	4*	0.6km	£110	£120	£130		
Mercure	4*	0.5km	£139	£149	£159		
*Breakfast not included							
**Self-catered apartments (breakfast not included)							

TEAM ACCOMMODATION

1. Mercure Nottingham, 2 George Street, Lace Market NG1 3BP

www.mercurenotttingham.com

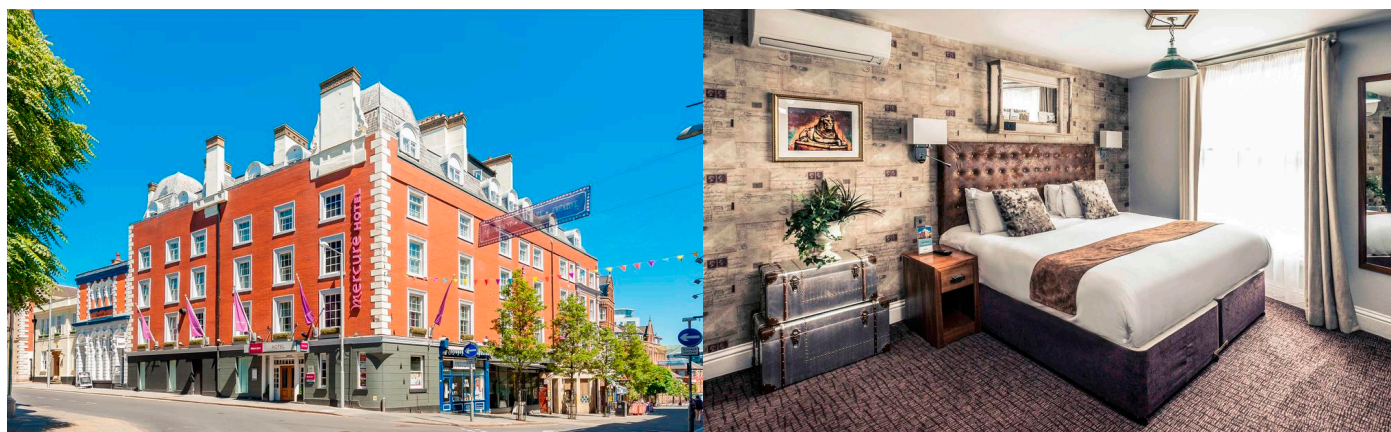
4-STAR HOTEL • BREAKFAST INCLUDED

Mercure is a boutique hotel conveniently located in the heart of the The Lace Market and close to the Motorpoint Arena Nottingham. The hotel offers uniquely designed rooms, a contemporary restaurant and impeccable service!

Standard triple room (triple occupancy) - £159 per room per night

Standard double/twin room (double occupancy) - £149 per room per night

Standard single room (single occupancy) - £139 per room per night



2. Jury's Inn Nottingham, Waterfront Plaza, Station Street, NG2 3BJ

www.jurysinns.com/hotels/nottingham

4-STAR HOTEL • BREAKFAST INCLUDED

Centrally located close to the railway station and the canal, the hotel features complimentary wi-fi, a restaurant and coffee bar.

Standard triple room (triple occupancy) - £130 per room per night

Standard double/twin room (double occupancy) - £120 per room per night

Standard single room (single occupancy) - £110 per room per night



TEAM ACCOMMODATION

3. Premier Suites, Ice House, Belward Street NG1 1JZ

www.premiersuitesnottingham.com

3-STAR APARTMENTS • BREAKFAST NOT INCLUDED

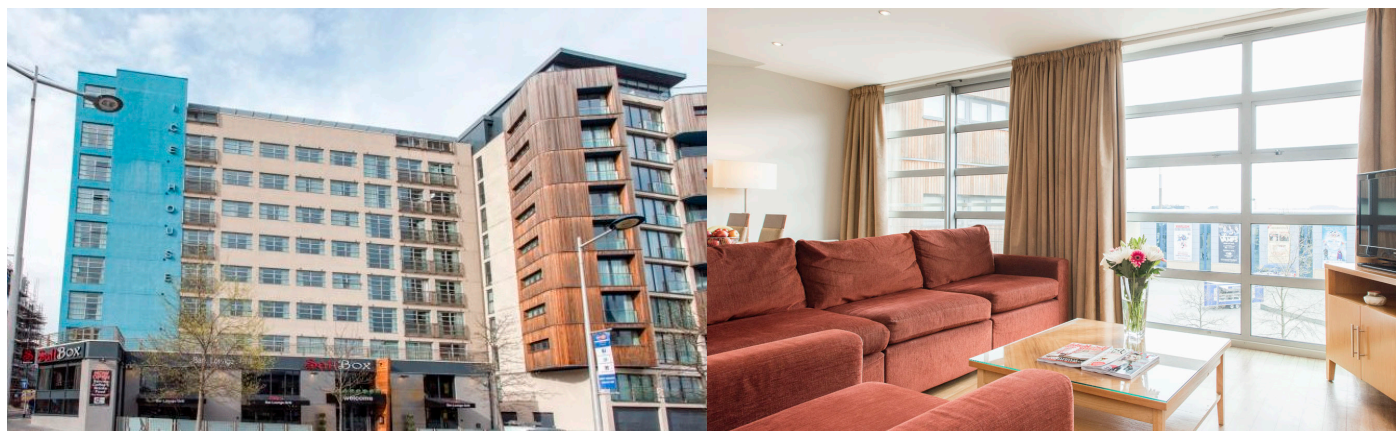
Attractive serviced apartments, with a choice of one or two bedrooms which include a modern, open-plan lounge and dining area with fully equipped kitchen. This is the closest accommodation to the Motorpoint Arena Nottingham, located right next door!

One-bedroom apartment (single/double occupancy) - £115 per night

Two-bedroom apartment (double/triple/quadruple occupancy) - £175 per night

Extra fold away bed (available in some two-bedroom apartments) - £25 per bed

Please note; the ORS does not display options for requesting rooms to accommodate 4 or 5 people. Please enter the total number of guests on the ORS and specify on **Form 02** the specific rooms required.



4. Premier Inn Nottingham Arena, London Road NG2 4UU

<https://www.premierinn.com/gb/en/hotels/england/nottinghamshire/nottingham/nottingham-arena-london-road.html>

3-STAR HOTEL • BREAKFAST NOT INCLUDED

Located close to the Motorpoint Arena Nottingham, this modern hotel includes complimentary wi-fi and an on-site restaurant.

Standard triple room (triple occupancy) - £99 per room per night average

Standard double/twin room (double occupancy) - £99 per room per night average

Standard single room (single occupancy) - £99 per room per night average

Alternative Premier Inn hotels are also located around the city.



TEAM ACCOMMODATION

5. Ibis Nottingham, 16 Fletcher Gate, NG1 2FS

www.accorhotels.com/gb/hotel-6160-ibis-nottingham-centre/index.shtml

2-STAR HOTEL • BREAKFAST INCLUDED

Located in the heart of the historic Lace Market, a short walk from the Motorpoint Arena Nottingham, the hotel features complimentary wi-fi, bar and lounge.

Standard Family room (triple occupancy) - £76 per room per night

Standard Twin room (double occupancy) - £72 per room per night

Standard Double room (single occupancy) - £68 per room per night



TRAVEL & TRANSPORT

OFFICIAL TRANSPORT

Nominated Airports

East Midlands Airport and Manchester Airport are the official arrival locations for the event. East Midlands Airport is the closest airport to Nottingham.

Airport Transfers - ISU Officials and Judges

Official transport will be provided for ISU Officials and Judges from East Midlands Airport or Manchester Airport to the Officials' Hotel, Crowne Plaza, Nottingham.

Airport Transfers - Teams

Teams are responsible for covering the cost of and for making their own transport arrangements to and from Nottingham, including airport transfers. The following transport providers have offered negotiated rates for transfers between the Team Hotels and East Midlands Airport or Manchester Airport. If travelling to an alternative airport, please contact the transport providers directly for a quote. Coaches are subject to availability, so advance booking is recommended. Bookings should be made directly with the transport providers using the contact details below:

1. Hammonds Coaches

www.hammondscoaches.com

East Midlands Airport to Official Team Hotels:

22-Seater coach: £400 return journey

53-Seater coach: £550 return journey

Manchester Airport to Official Team Hotels:

22-Seater coach: £775 return journey

53-Seater coach: £1050 return journey

To reserve, please email info@hammondscoaches.com and quote **'Skating 2020'** to access the quoted prices.

2. Silverdale Tours

www.silverdaletours.co.uk

East Midlands Airport to Official Team Hotels:

38-Seater coach: £475 return journey

49-Seater coach: £500 return journey

61-Seater coach: £550 return journey

Manchester Airport to Official Team Hotels:

38-Seater coach: £855 return journey

49-Seater coach: £900 return journey

61-Seater coach: £990 return journey

To reserve, please call direct on +44 (0)115 9121000 and quote **'Skating 2020'** to access the quoted prices.

Other airports

Birmingham Airport connects Nottingham to over 150 worldwide destinations with international arrivals from USA, Canada, UAE and China. Trains run regularly between Birmingham International and Nottingham Station and are as quick as 1 hour 30 minutes.

Arriving into a London airport? Just 90 minutes by rail or 2 hours 30 minutes by road from London, Nottingham sits right in the centre of England and is well connected by road and rail networks.

Train Travel

As Nottingham is located in the centre of the country, it is very well connected to all other major cities by the train network: www.eastmidlandsrailway.co.uk. Overseas visitors using the train service may be interested in purchasing a BritRail pass. Tickets can be purchased up to 6 months before departure and must be purchased in advance, they cannot be bought in the UK: <http://www.britrail.com/book-your-britrail-pass/>

GETTING TO THE MOTORPOINT ARENA NOTTINGHAM

Teams

As the Motorpoint Arena Nottingham is within easy walking distance of the Official Team Accommodation, teams are required to make their own way or organise their own transport to the competition venue. A shuttle bus will not be provided.

ISU Officials and Judges

The Officials' Hotel, the Crowne Plaza, is a 15-minute walk from the Motorpoint Arena Nottingham. A shuttle bus for accredited ISU Officials and Judges will be provided.

TRAVELLING TO THE UK

If you're an American, Canadian or Australian resident, you'll be able to travel visa-free to and throughout the UK, providing you have a valid passport and you meet the immigration rules. Citizens from some South American and Caribbean countries as well as Japan are also able to travel visa-free around the UK.

To check whether you need a visa to visit the UK, please visit: <https://www.gov.uk/browse/visas-immigration/tourist-short-stay-visas>

European Union citizens, non-EU member states of the EEA (Norway, Liechtenstein and Iceland), Switzerland, and members of the Overseas Countries and Territories (OCT) do not need a visa to enter the UK. If you are an EU National or are travelling to the UK from Europe, please visit this page for further information regarding the Brexit negotiations; <https://www.visitbritain.com/gb/en/plan-your-trip/getting-britain/passport-and-visa-requirements-entering-uk>

If you need an invitation letter to support your VISA application, a request form is available on the event website at www.wjsysc2020.com and on the ISU website.

ACCREDITATION

Accreditation will take place at the Motorpoint Arena Nottingham in the Accreditation Room which will be open at the following times:

- Wednesday 11 March - 09:00 - 18:00
- Thursday 12 March - 09:00 - 18:00
- Friday 13 March - 09:00 - 13:30

In order to make the accreditation process as efficient as possible and for any special requests or early accreditation, we kindly ask you to contact the Organizing Committee to pre-arrange an appointment. Please email oc@wjsysc2020.com.

Accreditation will be required at all times in the venue during the competition week and access will not be granted without an accreditation pass. Lost accreditation passes may be re-issued by the Organizing Committee further to approval by the ISU for a cash fee of £50 per pass.

COMPETITOR INFORMATION

Forms

Team forms for accommodation, meals, extra practice ice and more can be found on the event website at www.wjsysc2020.com and on the ISU website. These must be sent back to the Organizing Committee by the dates specified overleaf. Please check each individual form for details on how to submit.

Accommodation

In addition to the ORS, the Organizing Committee request that teams also fill in **Form 02 Preliminary Detailed Accommodation Request** to be submitted by **1 October 2019** to indicate their team's preferred accommodation. This form can be found on the event website at www.wjsysc2020.com and on the ISU website. Please see the **Summary of Deadlines** section for payment and cancellation details.

Extra Practice Ice Sessions

Additional practice sessions will be available from **Monday 9 - Wednesday 11 March 2020**. The practice ice will be available to book in 30-minute blocks at a cost of £100 per block. Practice ice sessions must be booked and paid for in advance by completing **Form 05 Extra Practice Ice Request**. Requests must be made by **20 December 2019**. If additional practice ice is required prior to the dates above, please email oc@wjsysc2020.com to check availability.

Meal services

All accredited persons who do not receive meal vouchers from the Organizing Committee need to pre-order their meals to take advantage of the venue's on-site meal service. Preliminary meal requests should be made by filling in **Form 03 Preliminary Team Meal Plan Request** and returning this by **1 October 2019**.

Final meal requests can be pre-ordered by filling in **Form 04 Final Team Meal Plan Request** by **20 February 2020**. The use of this service is at the team's own cost. The following meals are available to pre-order:

BREAKFAST

Price: £10

Included: Buffet selection of pastries, cereals and fruit

LUNCH

Price: £15

Included: Hot and cold buffet with meat, vegetarian and vegan options

DINNER

Price: £18

Included: Hot and cold buffet with meat, vegetarian and vegan options

A special offer for lunch + dinner is available at a total cost of **£32** offering a £1 discount per person. All prices are per person, per day. Lost meal tickets cannot be re-issued. In the case of a lost meal ticket, a new ticket must be purchased.

Merchandise

Merchandise will be available to pre-order on the event website at www.wjsysc2020.com. Personalised options are also available. Pre-ordered merchandise will be available to collect at the venue.

Event Tickets

Please visit the event website for more information on purchasing event tickets at www.wjsysc2020.com

SUMMARY OF DEADLINES

		to be submitted via	
Form	DEADLINE	Online Registration System	Form
Preliminary Entry	01.10.2019	X	
Accommodation Request	01.10.2019	X	
Entry Form For Judges	20.02.2020	X	
Entry Form Teams	20.02.2020	X	
Composition of Delegation	20.02.2020	X	
Travel Form	20.02.2020	X	
Hotel Rooming List	20.02.2020	X	
Press Information	20.02.2020	X (on ISU portal)	X (on ISU Extranet)
Competition Music Information	20.02.2020	X (on ISU portal)	X (on ISU Extranet)
Planned Program Content	20.02.2020	X (on ISU portal)	X (on ISU Extranet)
Skaters Health Care	20.02.2020		X (Form 01)
Preliminary Detailed Accommodation Request	01.10.2019		X (Form 02)
Preliminary Team Meal Plan Request	01.10.2019		X (Form 03)
Final Team Meal Plan Request	20.02.2020		X (Form 04)
Extra Practice Ice Request	20.12.2019		X (Form 05)
Travel Questionnaire	01.10.2019		X (Form 06)

TEAM ACCOMMODATION DEADLINES

Deadline for 50% deposit for hotel reservations from Federation	01.11.2019
Refund of 100% hotel deposit (minus banking charges) for cancellations up to	20.12.2019
Refund of 50% hotel deposit for cancellations from 21 December 2019 until	20.02.2020
No refund for cancellations after	21.02.2020
Federation to pay balance of hotel payment latest at	Registration (Advance payments to the OC are welcome)

PRELIMINARY EVENT SCHEDULE

DATE	TIME	EVENT
Wednesday, 11 March 2020	All day	Arrivals and Accreditation
	19:00	Coaches Meeting
Thursday, 12 March 2020	All day	Official Practice
	08:00	Technical Panel Meeting
	10:00	Team Leaders Meeting
	11:15	Medical Meeting
	14:45	Referee & Technical Controller Meeting
	15:30	Initial Judges Meeting
	19:00	Opening Ceremony & Draw Ceremony
	20:30	ISU and Judges Dinner
Friday, 13 March 2020	09:30	Official Practice
	16:00	Opening Ceremony
	16:50	Competition Short Program
Saturday, 14 March 2020	07:30	Official Practice
	14:30	Competition Free Skating
	19:00	Victory Ceremony
	19:15	Technical Panel Review Meeting
	20:30	Closing Party (Skaters)
	20:30	Farewell Dinner Officials
Sunday 15 March 2020	All day	Departures
	08:00	Judges Round Table Discussion

CONTACT

ISU World Junior Synchronized Skating Championships® 2020

Organizing Committee

National Ice Centre

Bolero Square

The Lace Market

Nottingham NG1 1LA

United Kingdom

Tel: +44 (0)115 853 3056

Email: oc@wjsysc2020.com

Website: www.wjsysc2020.com

USEFUL INFORMATION

Currency

National currency in the UK is the pound sterling (symbol: £). You get notes in denominations of £50, £20, £10 and £5, and coins in £2, £1, 50p, 20p, 10p, 5p, 2p and 1p. There are lots of places you can change money in the UK:

- Bureaux de change on high streets, in airports and major railway stations
- Banks
- Travel agents
- Post Offices

It's worth shopping around to get the best deal and remember to ask how much commission is charged.

Electricity

The voltage in the UK is 220/240 AC, 50 Hz. Electrical plugs have three rectangular pins and take fuses of 3, 5 and 13 amps. Visitors from abroad will need an adaptor for appliances that have been brought from home, such as laptops, hairdryers and phone chargers. Most hotels will have two-pronged European-style sockets for shavers only.

Climate

In the UK, the coldest months are December to March, when the temperature is usually between 3 and 6°C with potential for rain showers so be sure to bring a coat and warm layers of clothing.

Tipping

- **Tipping in restaurants** - If you're in a restaurant a service charge is sometimes added to your total bill, which you are expected to pay. If nothing is added and you are happy with the service you've received, a tip of around 10-15 percent is standard. Many restaurants automatically add a service charge to the bill, so do check before leaving a tip.
- **Tipping while staying at a hotel** - If a porter takes luggage to your room for you, it is customary to tip approximately £2. If you decide to order room service or are happy with the hotel service you can leave a tip at your own discretion.

Shopping

Opening hours in the UK are generally Monday-Saturday from 09.00 until 17.30. In main cities including Nottingham, many businesses, banks and shops operate limited hours on Sundays.

Drinking water

Water quality standards in the UK are rigorous, so tap water is generally safe to drink throughout the country, unless it is indicated otherwise by the property that you are staying at.

MINI GUIDE TO NOTTINGHAM

There are so many things to see and do in this historic city, you'll struggle to pack it all in - but do try!

HISTORY AND CULTURE

Nottingham Castle

Built by William the Conqueror's son, Nottingham Castle was first erected in 1068. Legendary home to the Sheriff of Nottingham, Robin Hood's mortal enemy, the castle was dismantled in the 17th century at the end of the Civil War. The Renaissance-style palace that was built on the ruins was also destroyed by Luddites in 1651 and in 1875, the gutted building was restored as a museum of fine art. The Castle is currently under renovation and is due to reopen in 2021. Just outside the Castle in the remains of the moat, is a bronze statue of a Robin Hood, surrounded by his merry men. This is the most popular place in the city to 'check in' and have a 'selfie'.

City of Caves

You can explore a whole new world in the caves underneath Nottingham. Meet real cave-dwellers from the past and see how the caves have been used and adapted over the centuries by local people to escape and take refuge from the world above.

National Justice Museum

The award-winning museum offers a unique insight into crime, punishment and British justice. The atmospheric building is a former 18th century prison and courthouse and features the largest collection of police memorabilia in the UK - including evidence from the Great Train Robbery trial. It also claims to be the most haunted building in England!

FOOD, BEVERAGE AND ENTERTAINMENT

Restaurants, cafes and tea shops

Across the city you are set to be spoilt for choice, with more than 300 places to eat and drink in the city centre alone. Try local delights at cosy cafes, fine dining at award winning restaurants or visit unique locations like the only remaining Victorian music hall outside of London, the Malt Cross, where Charlie Chaplin once performed! For a truly unique experience, visit the Kitty Café, where you can enjoy some feline company with your cup of tea whilst supporting a local cat rescue centre.

Pubs

Don't miss England's oldest pub, Ye Olde Trip to Jerusalem, built into the limestone rock upon which Nottingham Castle stands. Other historic pubs include Ye Old Salutation, The Bell, The Hand and Heart and The Canalhouse - which actually has a canal running right through it!

Theatre

The Theatre Royal and Concert Hall Nottingham enjoy visits from world-class orchestras, ballet companies, opera and touring drama alongside West End musicals, stand-up comedy, rock and pop. Nottingham Playhouse puts on a wide variety of drama, music, dance and comedy with touring shows and its own local productions.

MINI GUIDE TO NOTTINGHAM (CONTINUED)

OUTDOOR ACTIVITIES

In a short walking distance of the Motorpoint Arena Nottingham, you can find a variety of outdoor attractions which are not only great fun, but free of charge too!

Stonebridge City Farm

Visit the city farm to meet cows, sheep, goats, rabbits, guinea pigs, chickens, ducks, turkeys and lots more! With gardens and a nature trail to roam and an onsite café and farmshop selling organic produce, Stonebridge City Farm is a piece of the countryside in the heart of the city.

Green's Windmill

Green's Windmill and Science Centre is one of the only working city centre windmills still open in England. Open Wednesday's - Sunday, you can climb the mill, discover how flour is made, experiment like a scientist and visit the onsite shop. Well worth a visit for the view over the city alone.

The Arboretum

A historic, beautifully maintained park that is home to an important collection of over 800 trees, some of which are from the original collection planted in the 19th century. The award winning Arboretum is Nottingham's oldest public park and the closest to the city centre, also said to have been the inspiration for J.M Barrie's Neverland. The famous author lived in Nottingham before he wrote Peter Pan so it's a definite possibility - especially with Peter Pan wearing a very similar green outfit to Robin Hood!

Wollaton Hall & Deer Park

Standing on a natural hill three miles west of Nottingham City Centre, Wollaton Hall is a spectacular Elizabethan manor set in five hundred acres of gardens and parkland. The hall was used as the setting for Wayne Manor in the 2012 Batman film, Dark Knight Rises. Entry to the hall is free - charges apply for tours and entry into the Industrial Museum. Based three miles outside of the city, we recommend you obtain travel/public transport information via Nottingham Tourism Centre.

Sherwood Forest Visitor Centre & National Nature Reserve

Sherwood Forest is known all over the world as the playground of Robin Hood and is still alive today with history, nature and folklore. Based just under an hour from the city centre, no trip to Sherwood is complete without seeing the Major Oak - a majestic giant tree with a canopy spanning 28 metres and a trunk 10m in girth which has watched over the legendary landscape for a millennium. The Sherwood Arrow bus service runs hourly from Victoria bus station in Nottingham and stops outside the Sherwood Forest visitor centre. For up to date information speak to the Nottingham Tourism Centre team.

MORE INFORMATION

The Nottingham Tourism Centre

Pop in and say hello to the friendly team at the Nottingham Tourism Centre who can inform you about local events, attractions, tours, eateries and transport information. It's also a great place to pick up a Nottingham souvenir, so make the most of your stay by visiting the centre situated just by Old Market Square on Smithy Row.

Tel: (+44) 8444 77 5678

Instagram: @nottinghamtourismcentre

Twitter: @nottinghamtic

To plan your spare time in advance, we recommend visiting: www.visit-nottinghamshire.co.uk

Welcome to Nottingham, we hope you enjoy your stay!